

WARNING

- DO NOT use the NKC-125MA with the angle grinder which can NOT be fitted correctly instructed by this manual.
- NKC-125MA is only for grinding concrete and block. DO NOT use for grinding steel or other materials.
- NKC-125MA must be used with the Vacuum suitable for the concrete dust.
- NKC-125MA is only for 100-125mm Diamond Grinding Cup Wheels. DO NOT use with abrasive wheels.
- Always check the NKC-125MA for damage, cracks, or deformation before use.
- DO NOT use the NKC-125MA if it is cracked, damaged or bent as this could lead to injury.
- Be sure to wear the protective goggles, dust mask, protective foot wear, earplugs and other protective equipment when working.
- Keep NKC-125MA away from gasoline, solvents, and paraffin.
- Ensure the work piece is securely clamped before working.

Explanation of the pictograms.



General Warning.



Read the operating instructions before use.



Wear eye protection.



Wear breathing protection.



Wear ear protection.



Wear protective gloves.

SPECIFICATIONS

Model Code	NKC-125MA
Suitable Blade	Ø100~125mm (h21mm) Diamond Grinding Cup Wheel
Weight	470g (Main Unit with adaptor system)
Cut material	Concrete, Block.
Suitable Angle Grinders	Makita / BOSCH / Dewalt / Milwaukee / Metabo / HiKOKI / FLEX 115-125mm angle grinder. ※Makita / BOSCH : X-LOCK model can't be fitted. ※Dewalt : D28137, DCG405FN can't be fitted. ※Milwaukee : AG10 / AGV10 series can't be fitted.
※Based on the web as of 2021 Sep.	

OVER VIEW

[a] Main Unit / [b] Lock Nut / [c] Flange / [d] Spacer T12 x id16 & 14.3 / [e] Spacer T10 x id14.3 / [f] Spacer T7 x id14.3 / [g] Joint / [h] Wrench (L) / [i] Wrench (S) / [k] Sub Plate / [m] Offset Plate

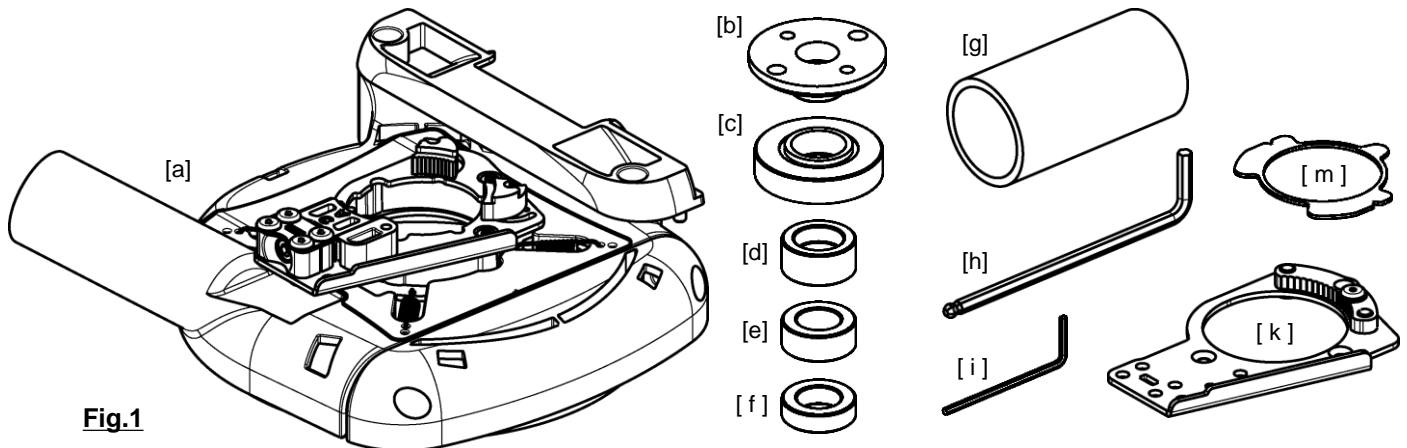


Fig.1

INSTALLATION



Check the instruction video at this QR code.



1. Detach the Guard from Angle Grinder. (Fig.2)
2. Some models need its Lever detached. (Fig.3)



Refer to the attached sheet for details.

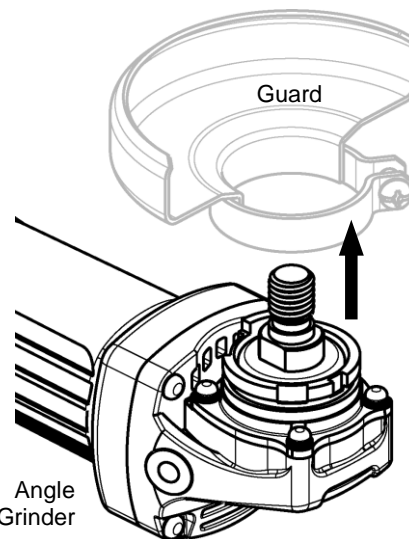
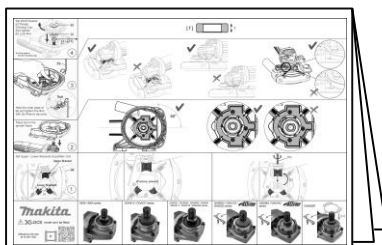


Fig.2

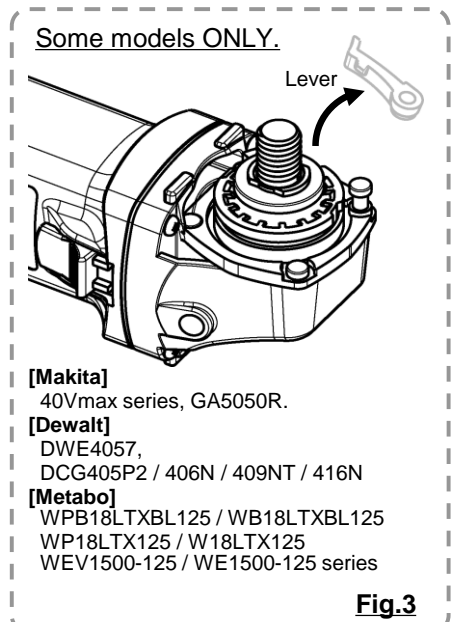
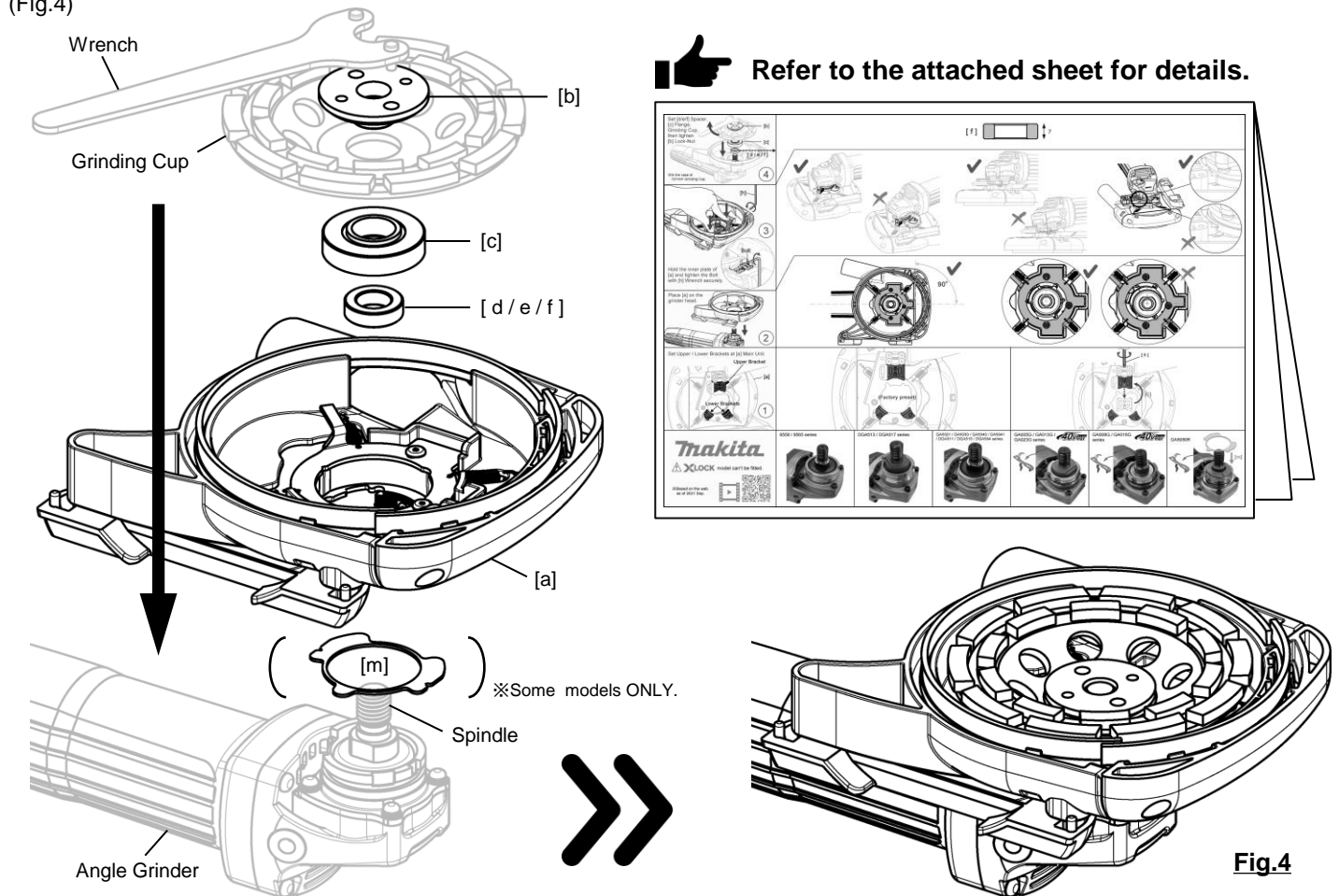
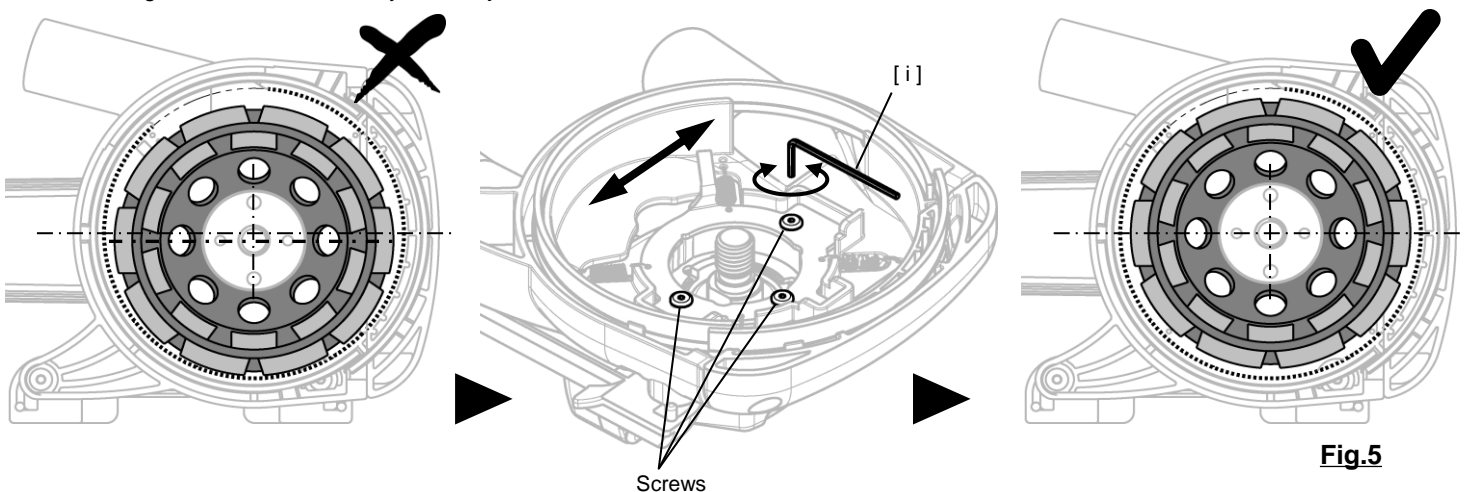


Fig.3

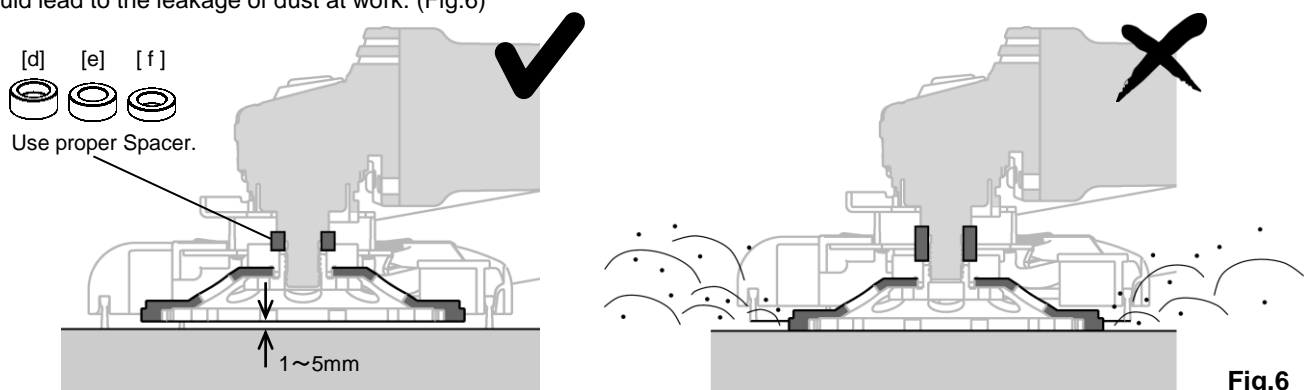
3. Attach [a] Main Unit to Angle Grinder. (Some models need [m] Offset Plate between [a] and Angle Grinder)
 4. Set [d / e / f] Spacer, [c] Flange, and Grinding Cup into Spindle.
 5. Tighten the [b] Lock Nut with Wrench.
- (Fig.4)



- ⚠ If Diamond Cup is off center, loosen 3 screws with [i] Wrench(S) and adjust the position of [a] Main Unit. (Fig.5)
 ※Re-tighten 3 screws securely after adjustment.



- ⚠ Use the proper Spacer [d / e / f] to keep the bottom space 1~5mm under the Grinding Cup, or it could lead to the leakage of dust at work. (Fig.6)



6. Attach the Handle to the Grinder and connect the Vacuum Hose into the Duct with [g] Joint. (Fig.7)

7. If the Handle comes in contact, detach the Side Cover from [a] Main Unit. (fig.8)

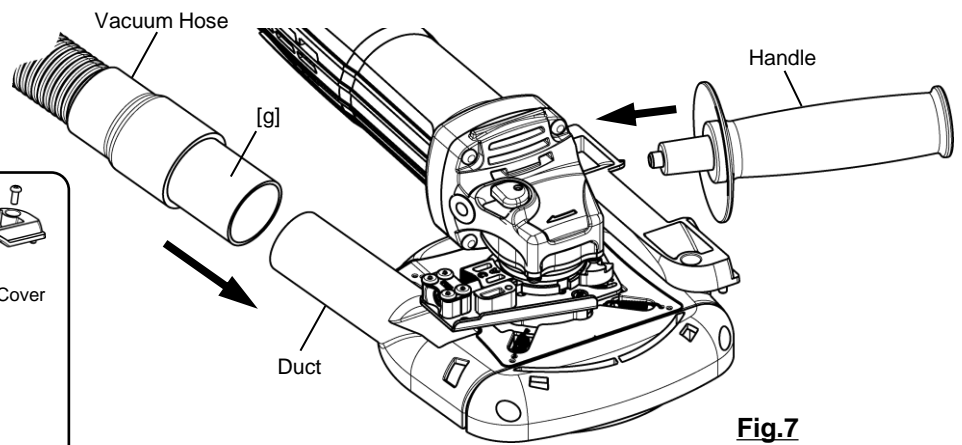


Fig.7

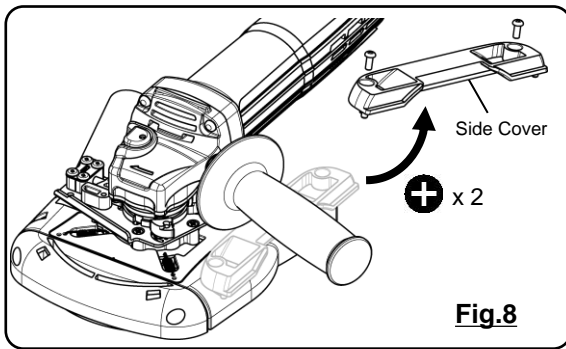


Fig.8

SURFACE GRINDING

1. Securely hold the angle grinder and handle.
2. Turn on the switch of the vacuum and angle grinder.
3. Place [a] Main Unit on material slowly, then move the Angle Grinder toward the grinding direction. (Fig.9)

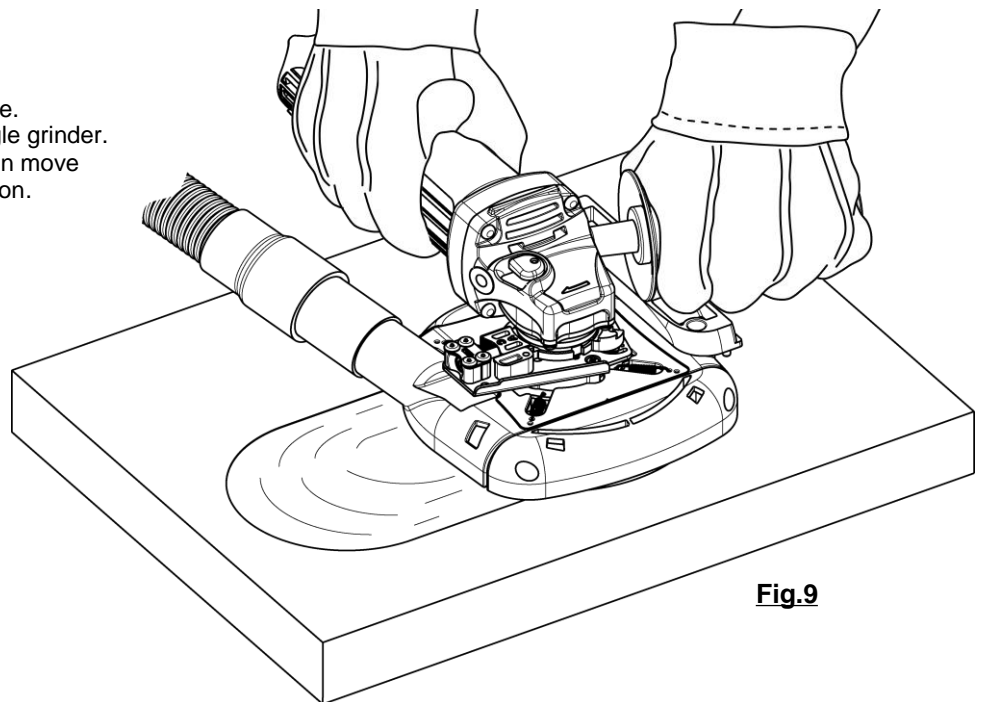


Fig.9

CORNER GRINDING

1. Detach the Front Cover and Side Cover from [a] Main Unit. (Fig.10)
2. Attach the Front Cover and Side Cover to [a] Main Unit, with its position changed. (Fig.11)

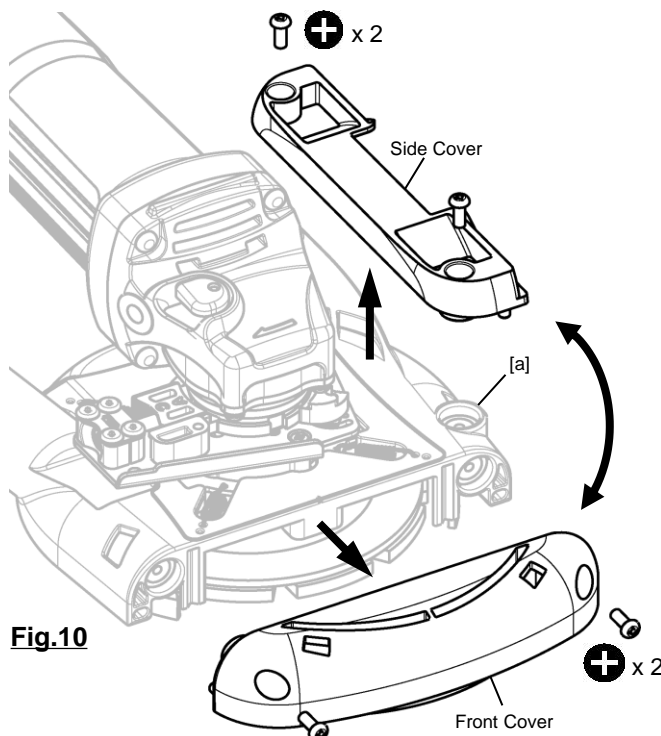


Fig.10

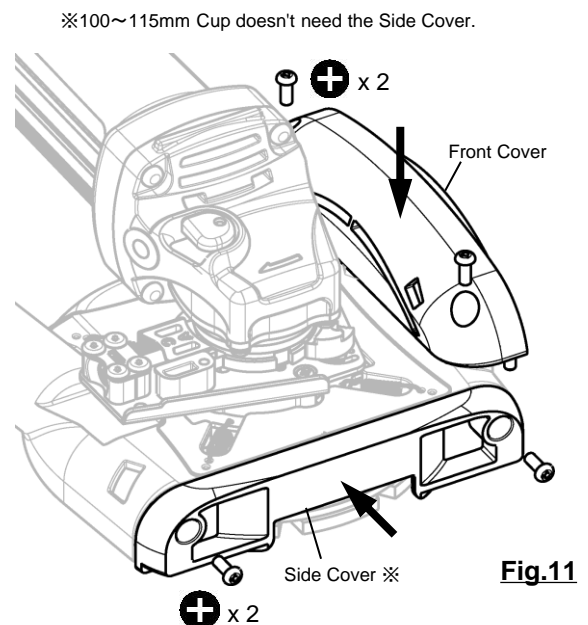
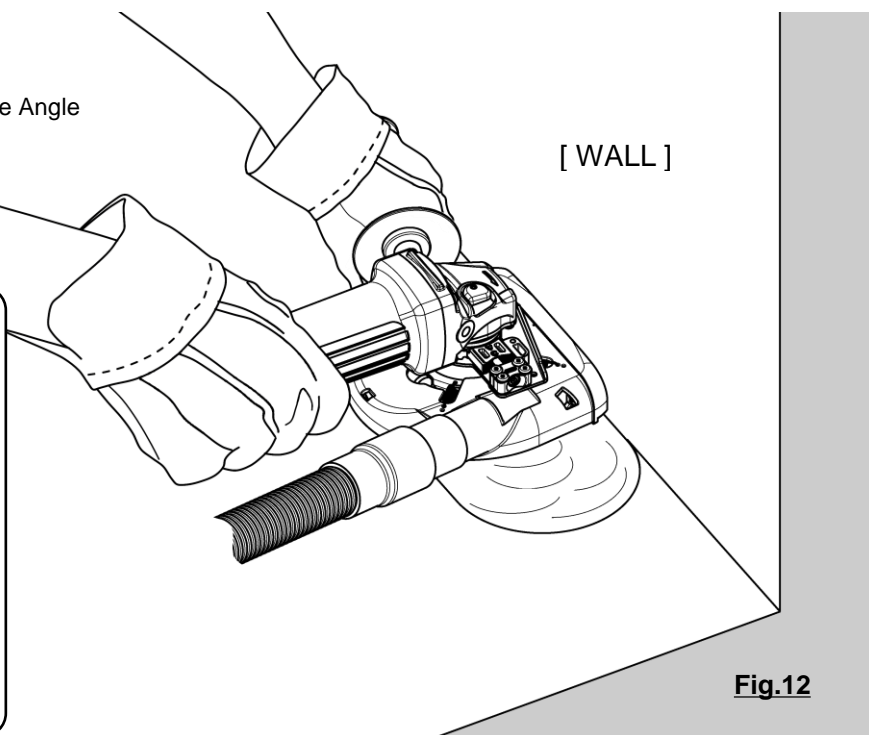
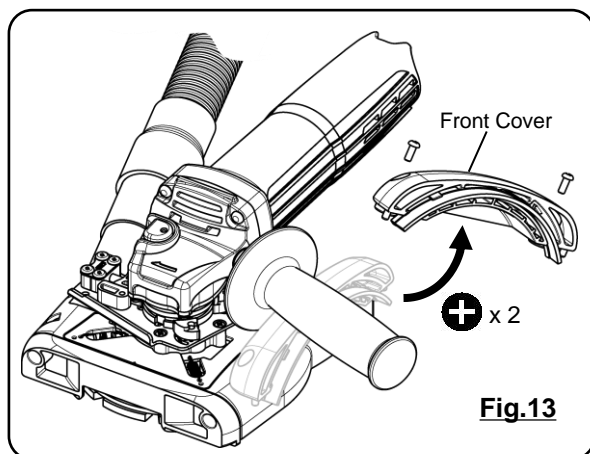


Fig.11

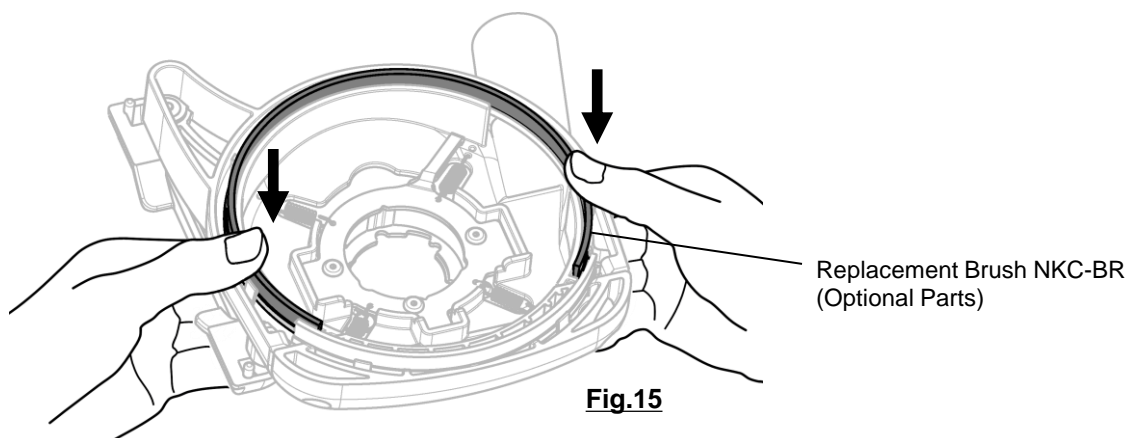
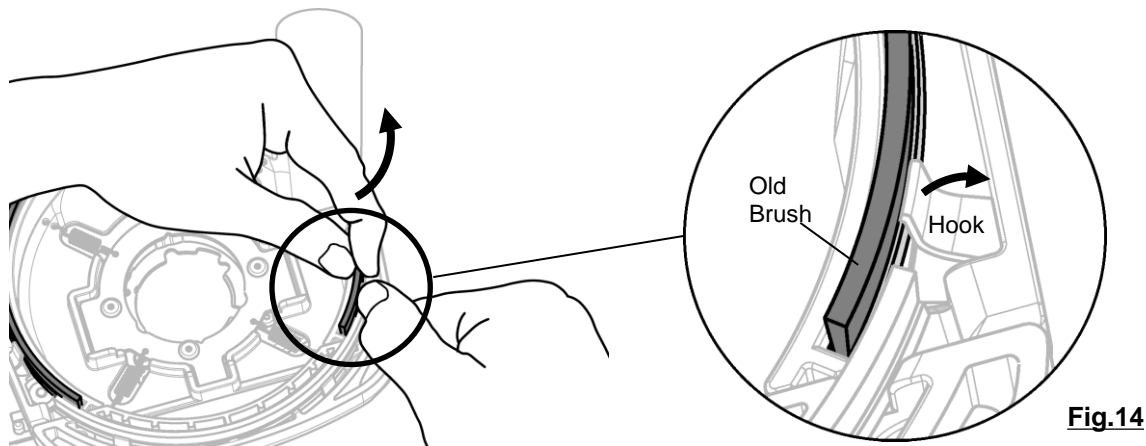
3. Securely hold the angle grinder and handle.
4. Turn on the switch of the vacuum and angle grinder.
5. Place the front surface against the wall.
6. Place [a] Main Unit on material slowly, then move the Angle Grinder toward the grinding direction. (Fig.12)

7. If the Handle comes in contact, detach the Front Cover from [a] Main Unit. (fig.13)



BRUSH REPLACEMENT

1. Bend each Hooks away from the Old Brush and pick it up. (Fig.14)
2. Set the Replacement Brush NKC-BR (optional parts) with each Hooks securely hold the Brush. (Fig.15)



Head Office in Japan
NAKAYA CO.,LTD.
 1313-92 Yanagisawa, Sanjo, Niigata, Japan



09th-Dec-2021

Eto Naoya
 Eto Naoya
 Managing Director