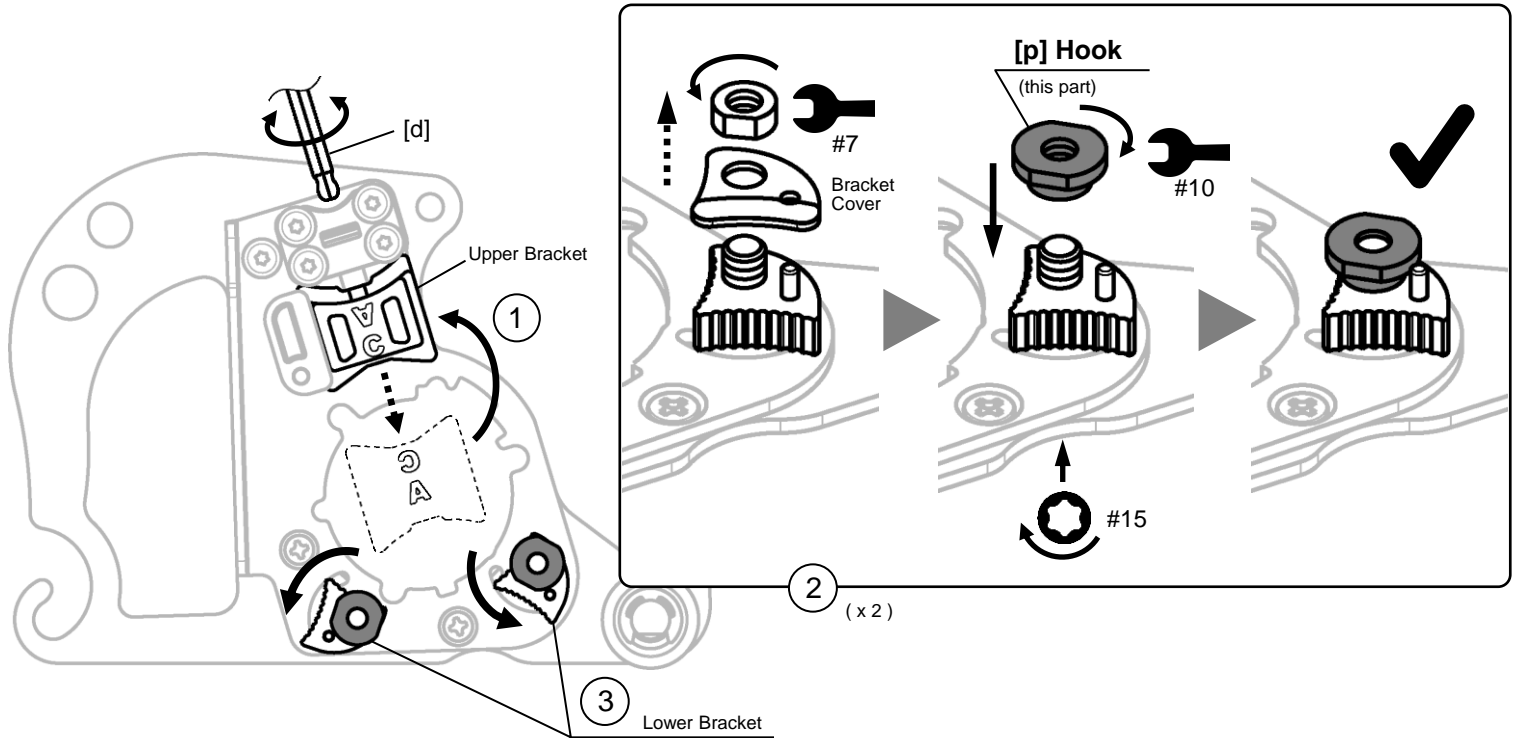


**[p] Hook** for **FLEX** L1506VR, L9-11 125, LE9-11 125, L12-11 125, L13-10 125-EC, LE14-7 125 INOX,  
L15-11 125, LE15-11 125, L3406VRG, LB17-11 125 type



1. Change the Upper Bracket direction by operating [d] Wrench.
2. Detach the Bracket Cover and attach **[p] Hook** (this part) to the Lower Brackets. (2pcs.)
3. Turn the Lower Brackets counterclockwise. (2pcs.)