

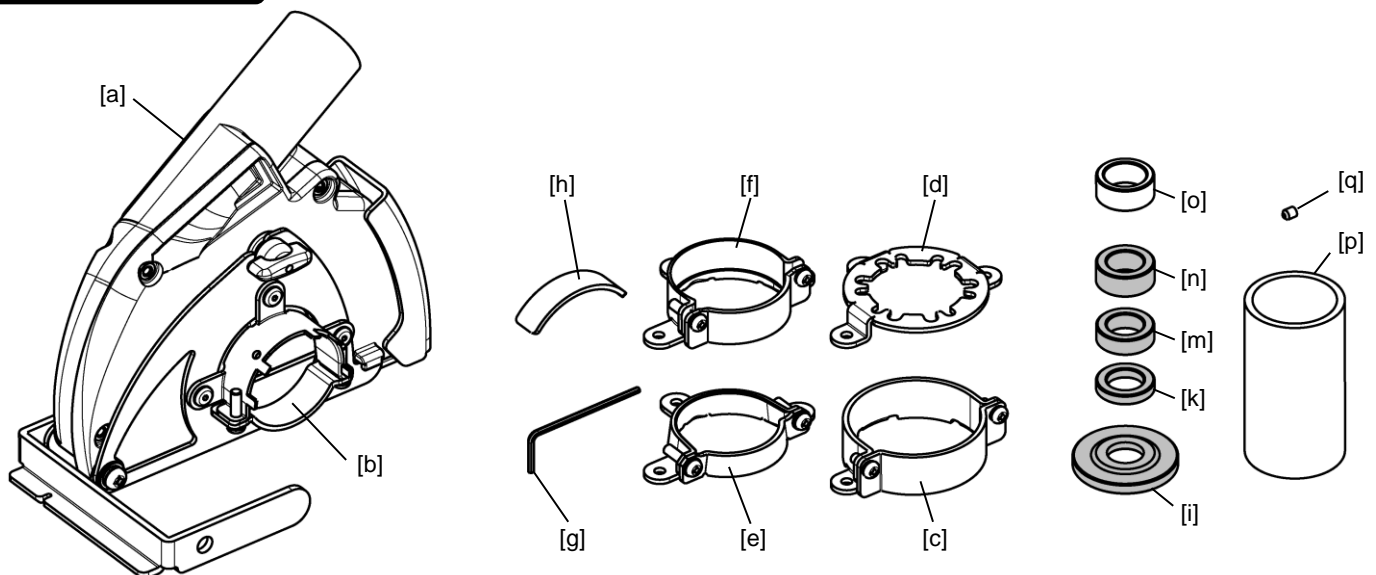
⚠ WARNING

- Only use the correct connector for each angle grinder. If the connector does not fit correctly then DO NOT use the CYCLONE with this angle grinder.
- CYCLONE is only for cutting concrete, block, and tile. DO NOT use for cutting steel or other materials.
- CYCLONE is only for Diamond Cutting blades. DO NOT use with abrasive wheels or tipped saw blades.
- Always check the CYCLONE for damage, cracks, or deformation before use. DO NOT use the CYCLONE if it is cracked, damaged or bent as this could lead to injury.
- Be sure to wear protective goggles, a dust mask, protective foot wear, earplugs and other protective equipment when working.
- Keep the CYCLONE away from gasoline, solvents, and paraffin.
- Ensure the cutting material securely clamped before cutting.

SPECIFICATIONS

Model Code	NK-125CY	
Suitable Blade	115-125mm / T1.5-10mm Diamond Blades.	
Cut Depth	5-33mm (125mm Blade)	
Weight	550g (Main Unit)	
Cut material	Concrete, Block, Tile, ...etc.	
Suitable Angle Grinders	HITACHI	G12SN, G12SQ, G12VA, G12SS, G12SA3, G12SR3, G13SN, G13SQ, G13YF, G13VA, G13SS, G13SB3, G13SR3
	MAKITA	9553NB, 9554NB, 9554NBKD, 9554NBKWX, 9555NB, 9557NB, 9557NBD, 9558NB, 9564CV, 9564H, 9564PCV, 9564PZ, 9565CV, 9565H, 9565PCV, 9565PZ, GA4530, GA4530KD, GA4534, GA5034
	BOSCH	GWS7-115, GWS7-115E, GWS8-115, GWS8-125, GWS10-125, GWS11-125CI, GWS11-125CIE, GWS14-125CI, GWS14-125CIE, GWS14-125CIT, GWS14-125Inox, GWS15-125CIH, GWS15-125CIEH, GWS15-125CITH
	DEWALT	D28113, D28113K, D28117, D28135K, DWE4050, D28065, D28134
	METABO	WEPBA14-125, WEBA14-125, WEPA14-125, WEP14-125, WEA14-125, WE14-125VS, WE14-125, WPA11-125, WP11-125, WBA11-125, WB11-125, WA11-125, W11-125, WE9-125, WP8-125, W8-125
	MILWAUKEE	AG12-125X, AGV12-125X, AGV12-125XPD, AGV15-125XC, AGV15-125XE
	FLEX	L3309/125, L3309FR, L3309FRG, L3410FR, L3410VR

OVER VIEW

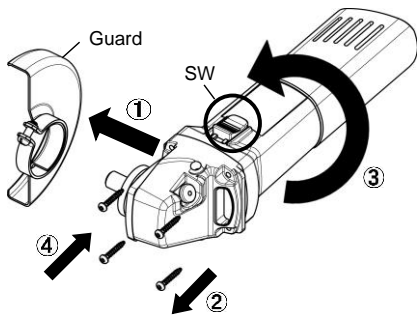


[a] Main Unit, [b] M-Connector, [c] B-Connector, [d] F-Connector, [e] H-Connector, [f] D-Connector, [g] Wrench, [h] Collar, [i] Base Flange, [k] T4.5 Spacer, [m] T7.3 Spacer, [n] T9.4 Spacer, [o] T10 x id16 Spacer, [p] Hose Adapter, [q] Set Screw.

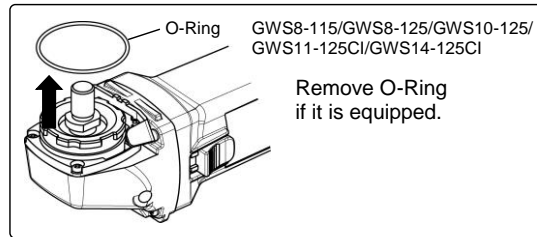
PREPARATION

⚠ WARNING

- Be sure to turn off the angle grinder and remove the plug from the electrical outlet in advance.
- If the connector is loose and cannot be securely attached on the angle grinder, do NOT use CYCLONE in this state. Otherwise it could lead to injury.

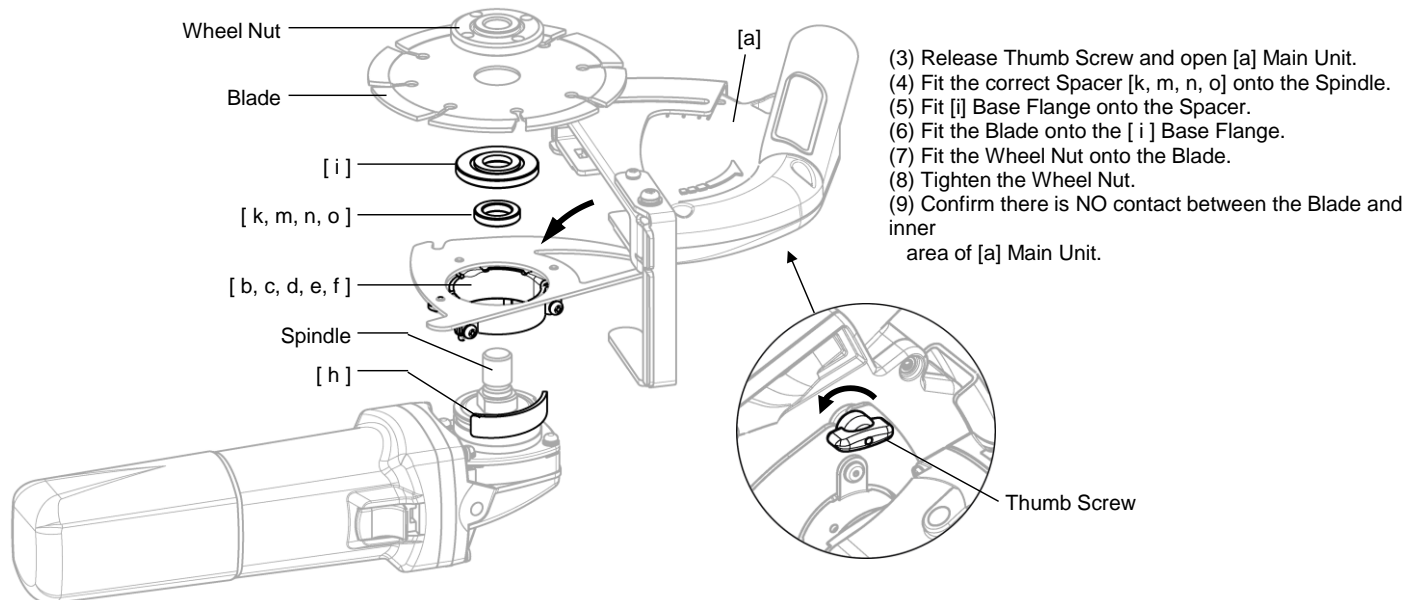
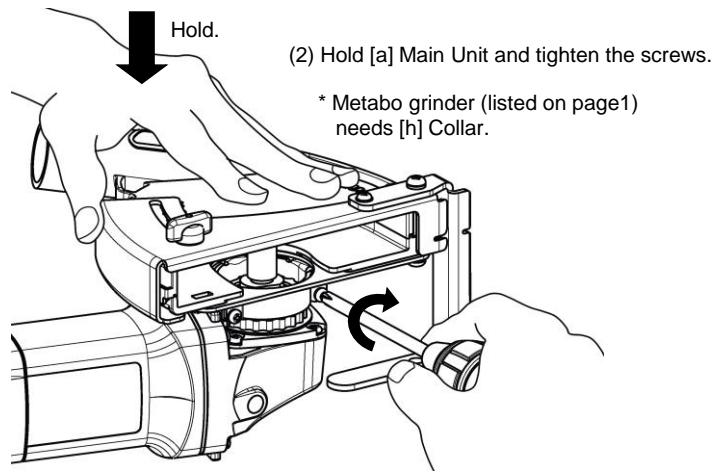
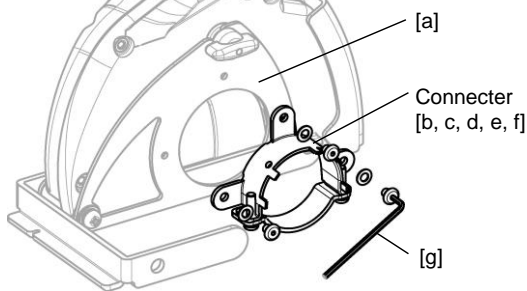


- ① Take the Guard off.
- ② Remove the Screws.
- ③ Turn the Grinder Body to locate the SW upper position.
- ④ Tighten the Screws.



INSTALLATION

- (1) Choose the correct Connector and fit it to [a] Main Unit by [g] Wrench.



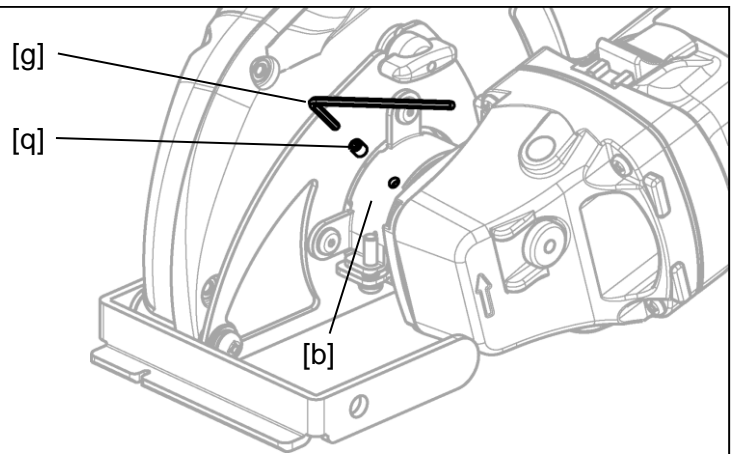
Brand	HITACHI	DEWALT	FLEX	MILWAUKEE	MAKITA	BOSCH	METABO
Model	G13SR3 etc.	D28134 etc.	L3410FR etc.	AG12-125X etc.	9558NB etc.	GWS8-125 etc.	GWS14-125CI etc. WE14-125 Plus etc.
Connector	[e]	[f]	[d]	[b] (Factory Preset)		[c]	
Collar	—						[h]
Spacer	—	[o]	[m]	[k]	[n]	[m]	

BOSCH GRINDERS (GWS7-115, GWS7-115E)

When using BOSCH grinders (GWS7-115 / GWS7-115E), tighten [q] Set Screw into the hole on [b] M-Connector using [g] Wrench after installation to prevent slipping on the Gearbox housing.

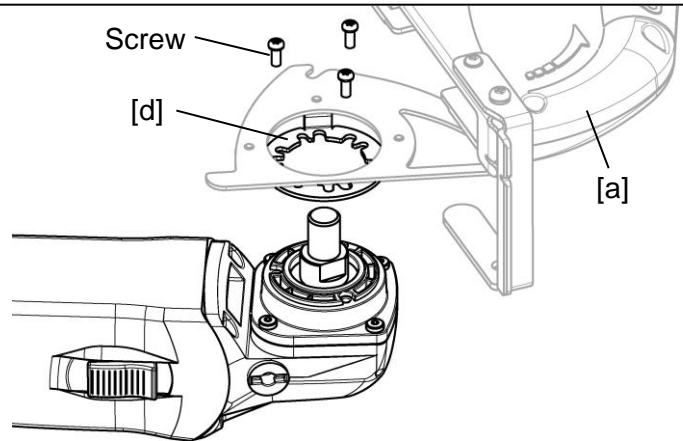
⚠ CAUTION

Do NOT over tighten [q] Set Screws or they could cause damage or deformation to the Gearbox housing and Connector.



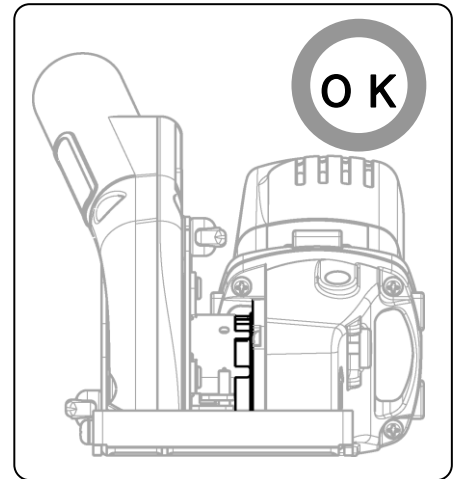
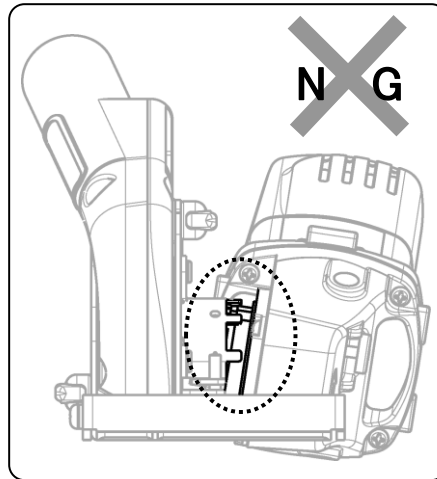
FLEX GRINDERS

When using FLEX grinders (listed on Page1), set [d] F-Connector on [a] Main Unit and fix them onto the grinder by tightening the original screws of the angle grinder.



⚠ CAUTION

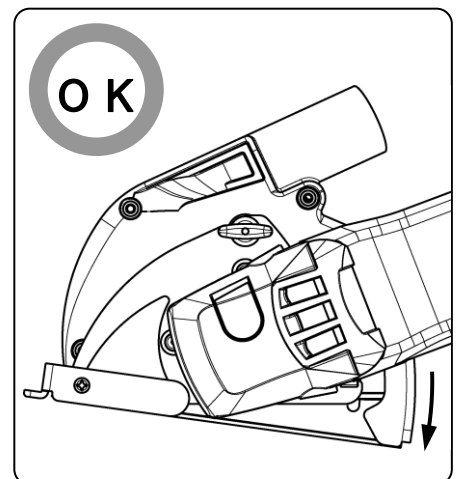
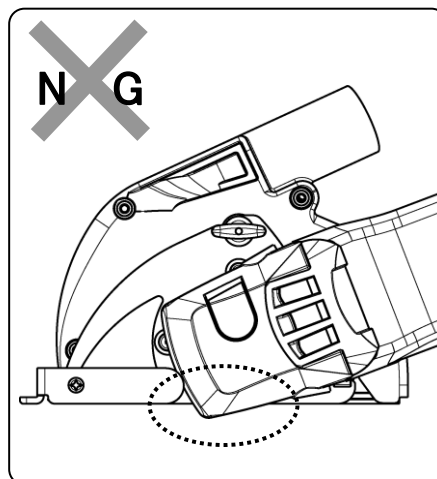
Make sure [a] Main Unit is securely attached without a tilt, otherwise it may come loose, causing injury.



⚠ CAUTION

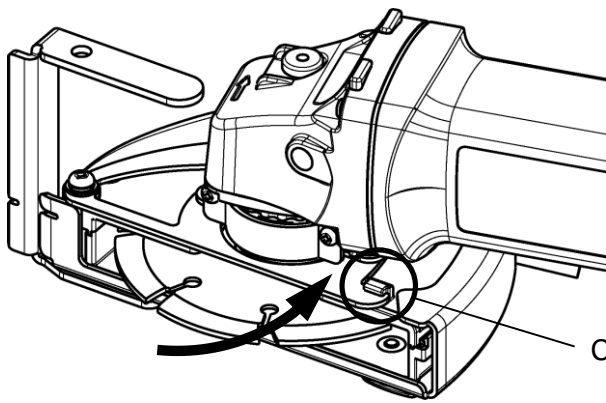
Adjust the Base position to cancel the projection of the Angle Grinder gearbox, if required.

→ Refer to "DEPTH ADJUSTMENT" instruction at page 4.

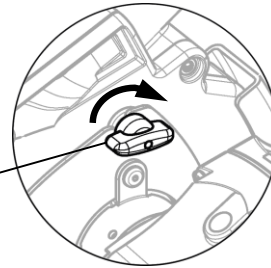


FINALIZING

Close [a] Main Unit and tighten the Thumb Screw.



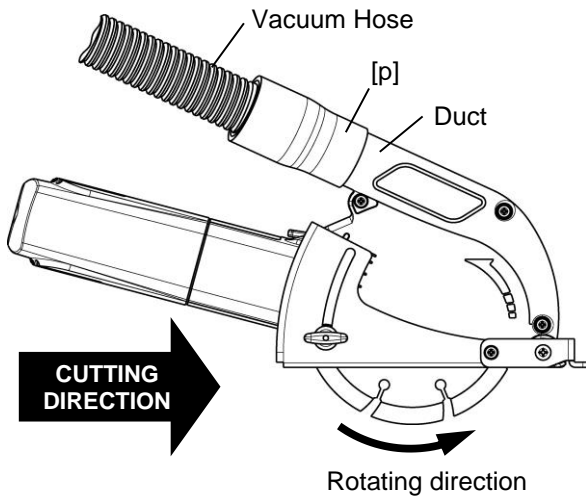
Thumb Screw



Confirm the hook securely locates the steel plate.

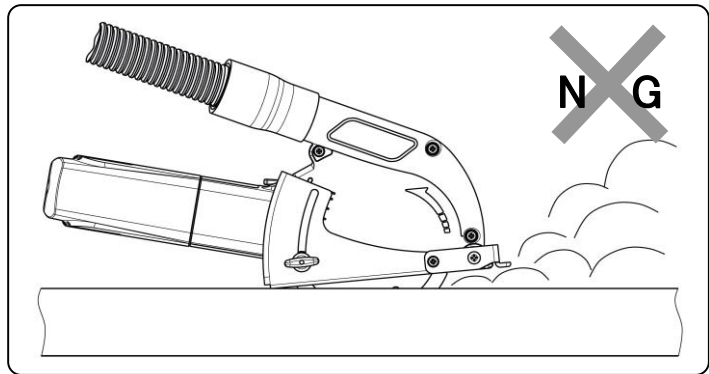
CUTTING

Securely connect the Vacuum Hose to the port of [a] Main Unit using [p] Hose Adapter, then turn the Angle Grinder and Vacuum on and start cutting.

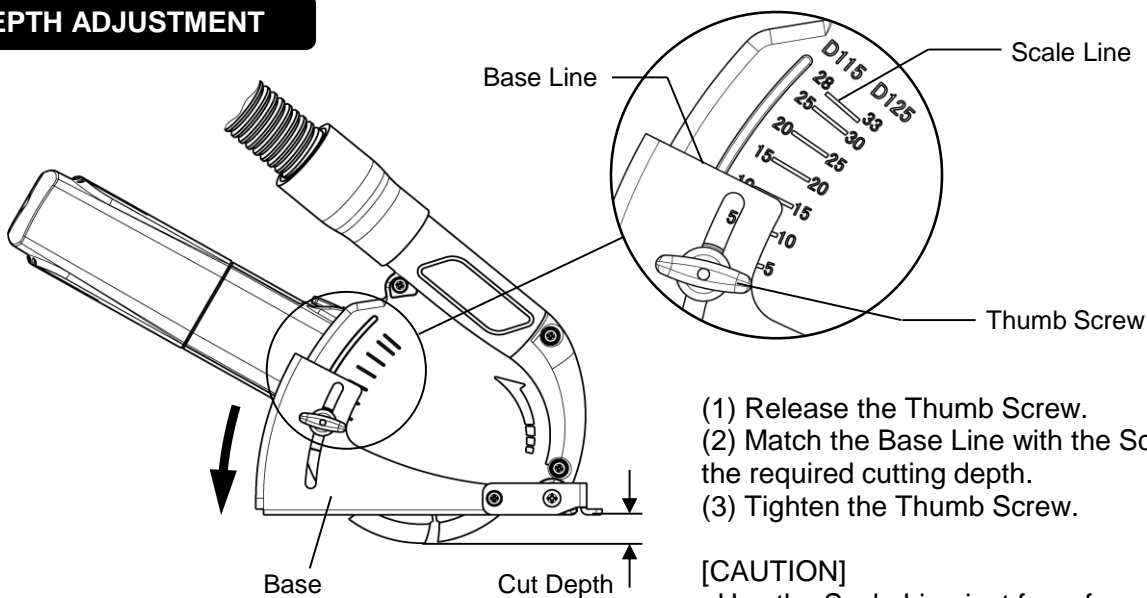


[CAUTION]

1. Make sure the blade is rotating in the right direction.
2. Ensure no gaps between the material and bottom surface of [a] Main Unit, otherwise the dust could escape.



DEPTH ADJUSTMENT



- (1) Release the Thumb Screw.
- (2) Match the Base Line with the Scale Line of the required cutting depth.
- (3) Tighten the Thumb Screw.

[CAUTION]

Use the Scale Line just for reference.

Head Office in Japan
NAKAYA CO.,LTD.
1313-92 Yanagisawa, Sanjo, Niigata, Japan



Nov-03 2014

Eto Naoya
Managing Director