

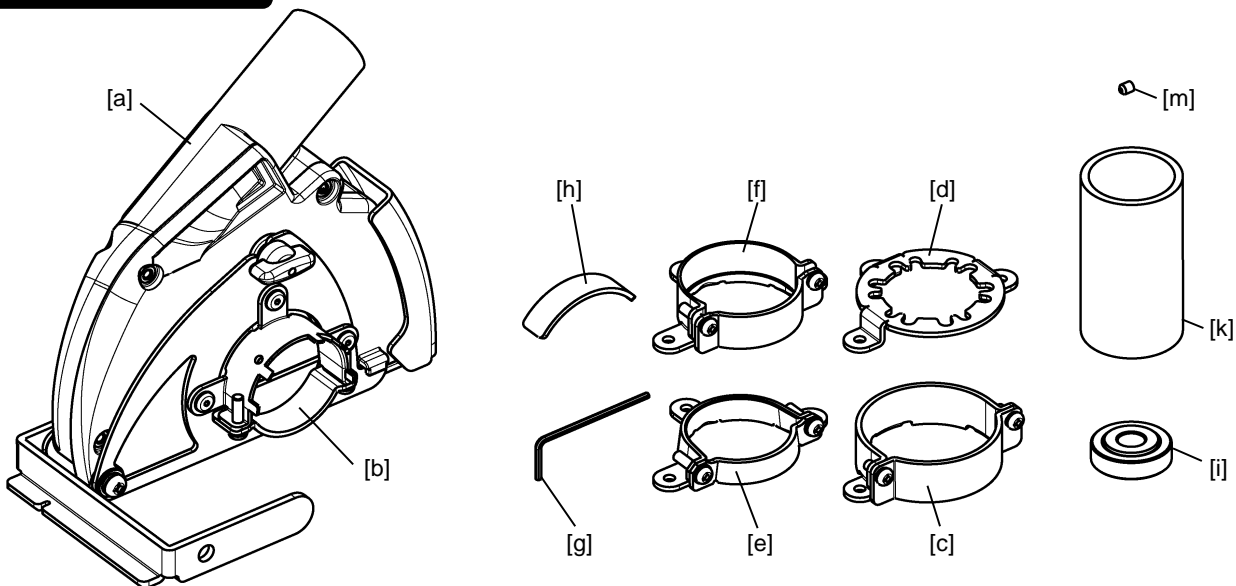
⚠ WARNING

- Securely use the correct connector for each angle grinder. If any connector does not fit on, DO NOT use the CYCLONE with this angle grinder.
- CYCLONE is only for cutting the concrete, block, and tile. DO NOT use for cutting the steel or other materials.
- CYCLONE is only for Diamond Cutting blades. DO NOT use with abrasive wheels or tipped saw blades.
- Always check the CYCLONE for damage, cracks, or deformations before use. DO NOT use the CYCLONE if it cracked, damaged or bent as this could lead to injury.
- Be sure to wear the protective goggles, a dust mask, protective foot wear, earplugs and other protective equipment when working.
- Keep the CYCLONE away from gasoline, solvents, and paraffin.
- Ensure the cutting material securely clamped before cutting.

SPECIFICATIONS

Model Code	NK-125CY	
Attachable Blade	105 -125mm / T1.5-2.2mm Diamond Blades.	
Cut Depth	5-33mm (125mm Blade)	
Weight	550g (Main Unit)	
Cut material	Concrete, Block, Tile, ...etc.	
Attachable Angle Grinders	BOSCH	GWS 6/7/8 100mm series
	MAKITA	9553 / 9556 / 9563H, GA403 series
	HITACHI	G10 series, PDA100 series
	KEYANG	ACT100 series
	RYOBI	100mm Angle Grinder series
	DEWALT	100mm Angle Grinder series (some models can't be fitted)
	METABO	100mm Angle Grinder series (some models can't be fitted)
	MILWAUKEE	100mm Angle Grinder series (some models can't be fitted)
	FLEX	100mm Angle Grinder series (some models can't be fitted)

OVER VIEW

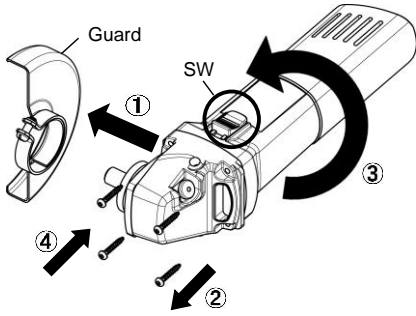


[a] Main Unit, [b] M-Connector, [c] B-Connector, [d] F-Connector, [e] H-Connector, [f] D-Connector, [g] Wrench, [h] Collar, [i] Flange, [k] Hose Adapter, [m] Set Screw.

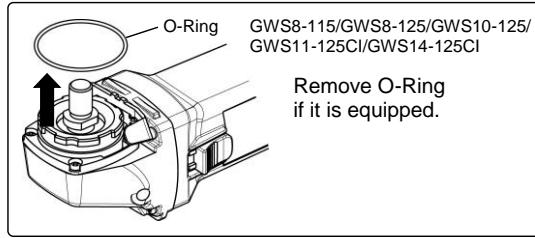
PREPARATION

⚠ WARNING

- Be sure to turn off the angle grinder and remove the plug from the electrical outlet in advance.
- If the connector is loose and cannot be securely attached on the angle grinder, do NOT use CYCLONE in this state. Otherwise it could lead to injury.

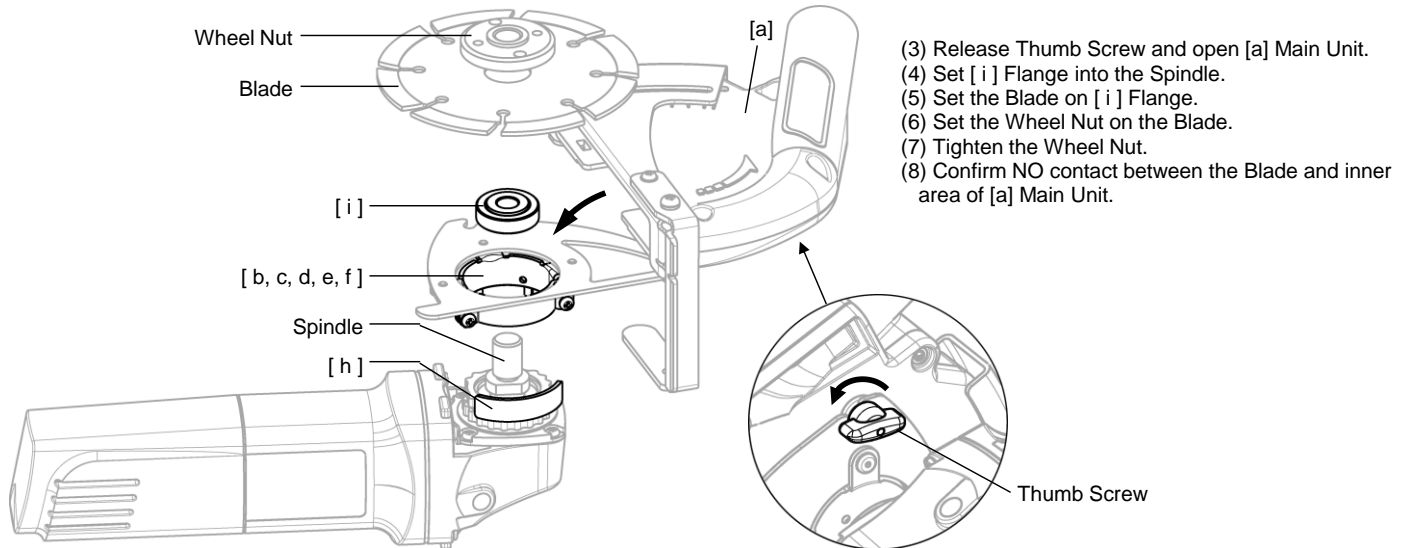
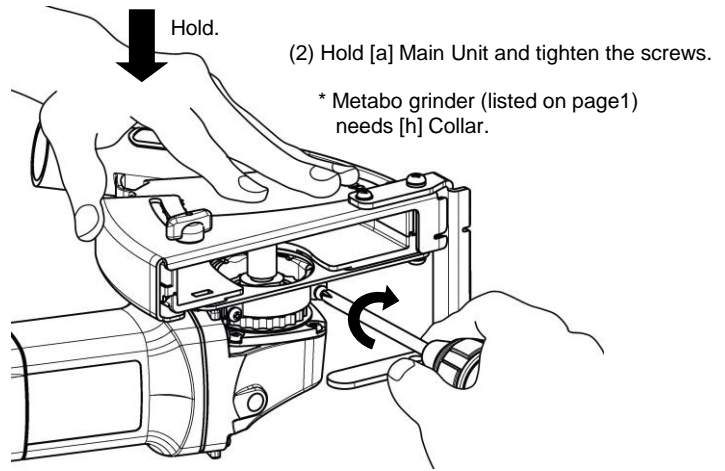
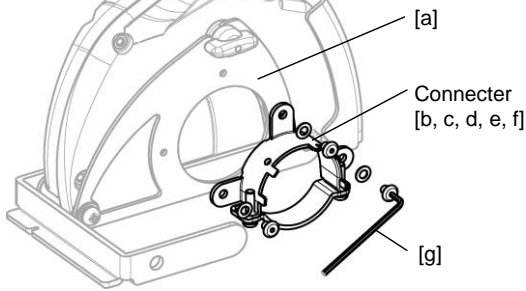


- ① Take the Guard off.
- ② Remove the Screws.
- ③ Turn the Grinder Body to locate the SW upper position.
- ④ Tighten the Screws.



INSTALLATION

- (1) Choose the proper Connector and fit it to [a] Main Unit by [g] Wrench.



M : Middle sized model / L : Large sized model

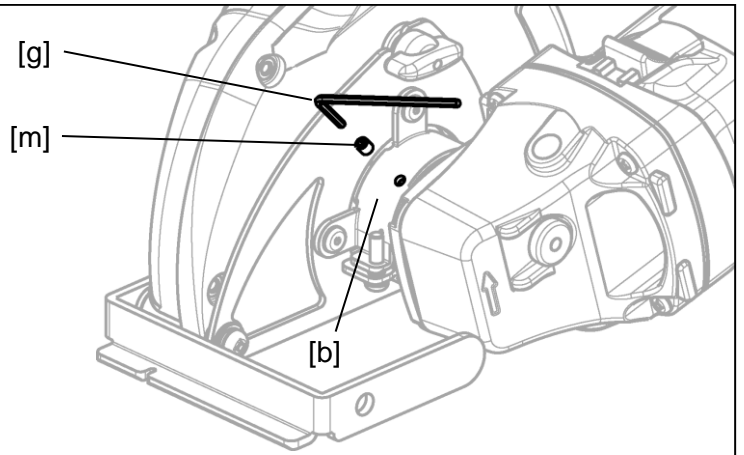
Brand	HITACHI KEYANG RYOBI	DEWALT	MILWAUKEE (M) FLEX	MILWAUKEE (L)	MAKITA	BOSCH (M)	BOSCH (L)	METABO
Connector	[e]	[f]	[d]		[b] (Factory Preset)		[c]	
Collar								[h]

**BOSCH GRINDERS
(GWS7-115, GWS7-115E)**

When using BOSCH grinders (GWS7-115 / GWS7-115E), tighten [m] Set Screw into a hole of [b] M-Connector by [g] Wrench after installation to prevent the slip of the Gearbox housing.

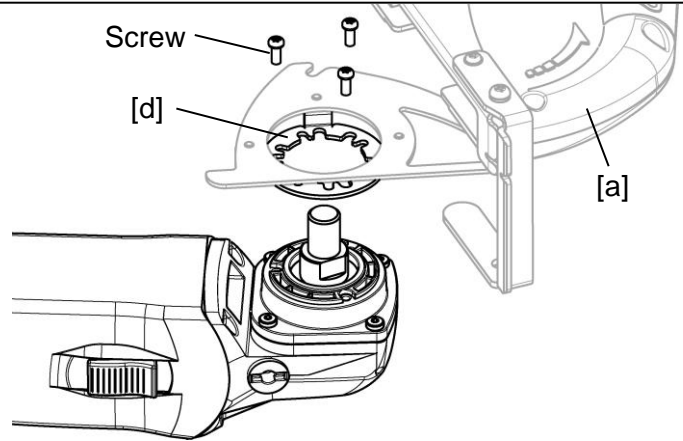
⚠ CAUTION

Do NOT over tighten [m] Set Screws or they could cause damage or deformation to the Gearbox housing and Connector.



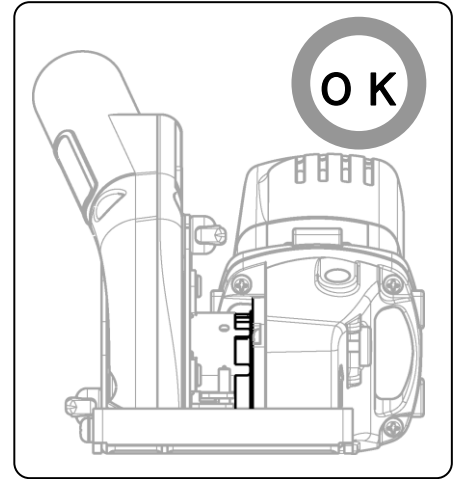
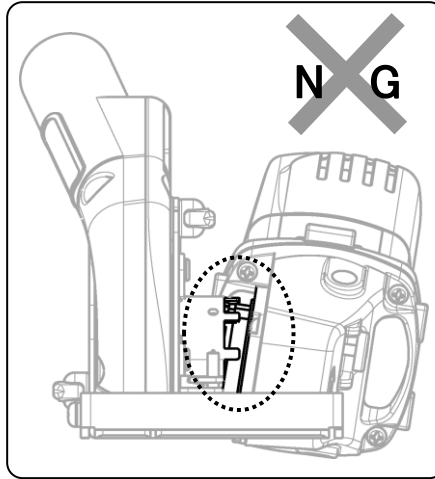
FLEX GRINDERS

When using FLEX grinders (listed on Page1), set [d] F-Connector on [a] Main Unit and fix them on a grinder by tightening the original screws of an angle grinder.



⚠ CAUTION

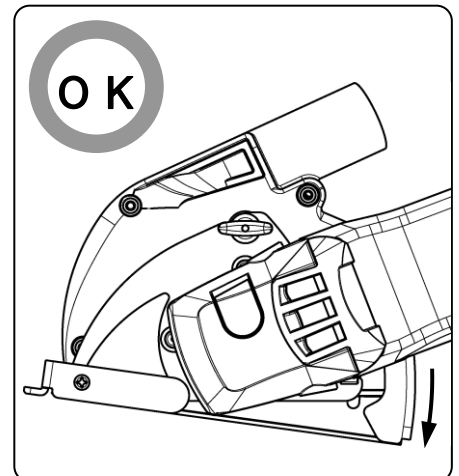
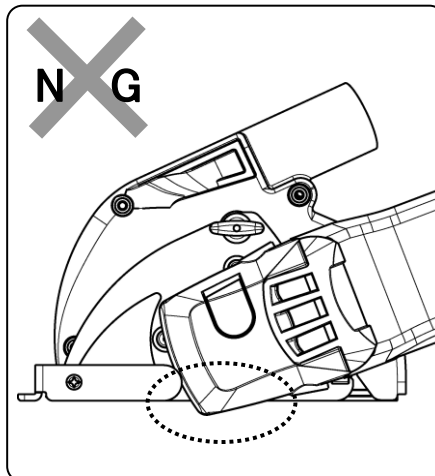
Make sure [a] Main Unit is securely attached without a tilt, otherwise it may come loose, causing injury.



⚠ CAUTION

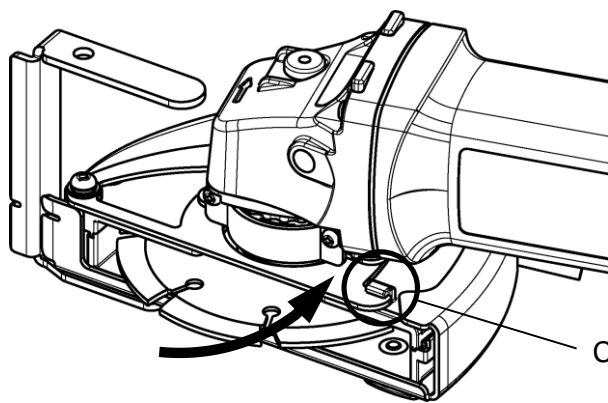
Adjust the Base position to cancel the projection of Gear Head of the Angle Grinder, if required.

→ Refer to "DEPTH ADJUSTMENT" instruction at page 4.

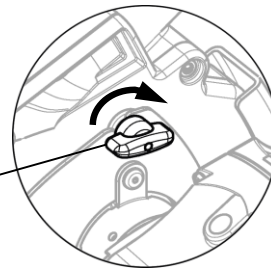


FINALIZING

Close [a] Main Unit and tighten the Thumb Screw.



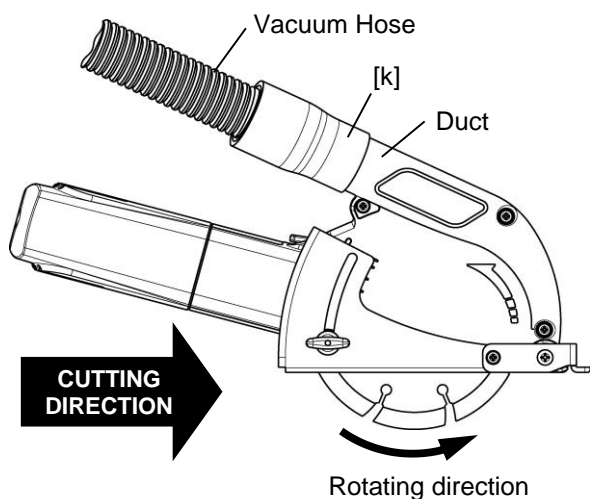
Thumb Screw



Confirm the hook securely holds the steel plate.

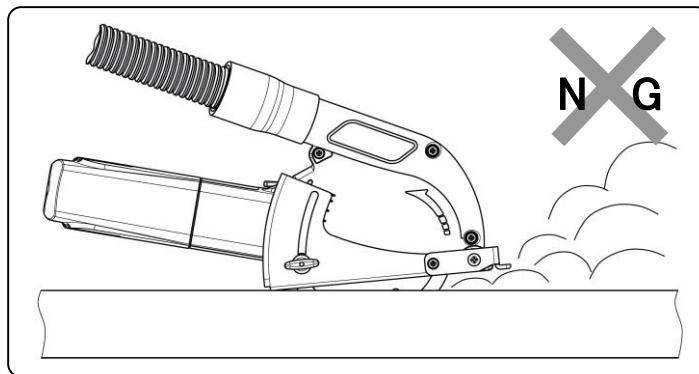
CUTTING

Securely connect the Vacuum Hose to the Duct of [a] Main Unit by [k] Hose Adapter, then turn the Angle Grinder and Vacuum on and start cutting.

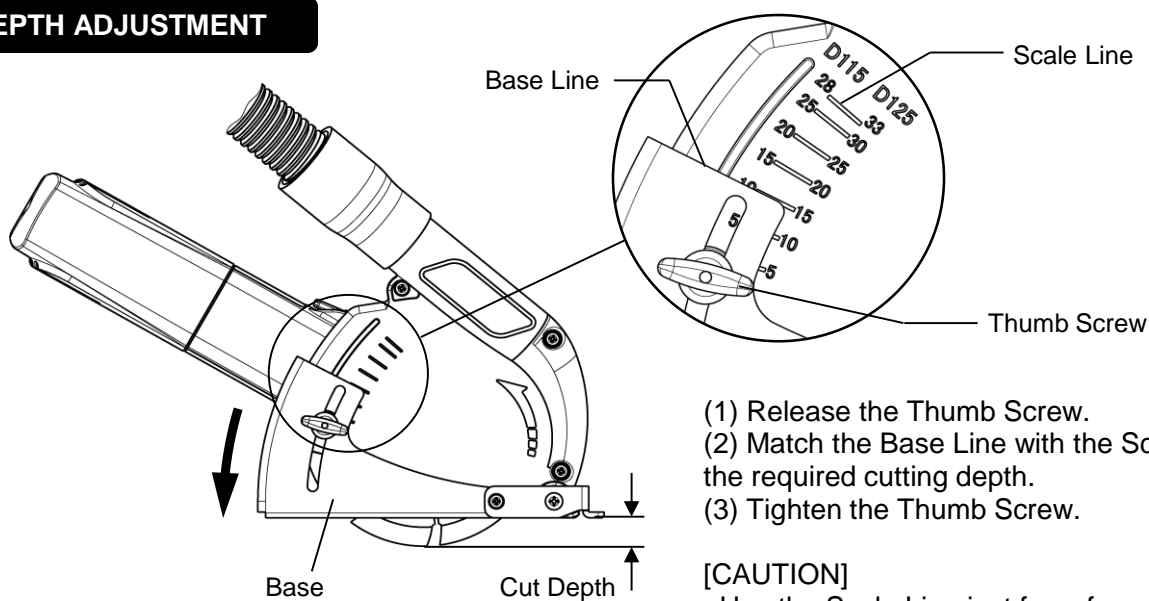


[CAUTION]

1. Make sure the blade is rotating in the right direction.
2. Ensure no gaps between the material and bottom surface of [a] Main Unit, otherwise the dust could escape.



DEPTH ADJUSTMENT



- (1) Release the Thumb Screw.
- (2) Match the Base Line with the Scale Line of the required cutting depth.
- (3) Tighten the Thumb Screw.

[CAUTION]

Use the Scale Line just for reference.

Head Office in Japan
NAKAYA CO.,LTD.
1313-92 Yanagisawa, Sanjo, Niigata, Japan



Oct-22 2014

Eto Naoya
Managing Director